

PYROBEL 16

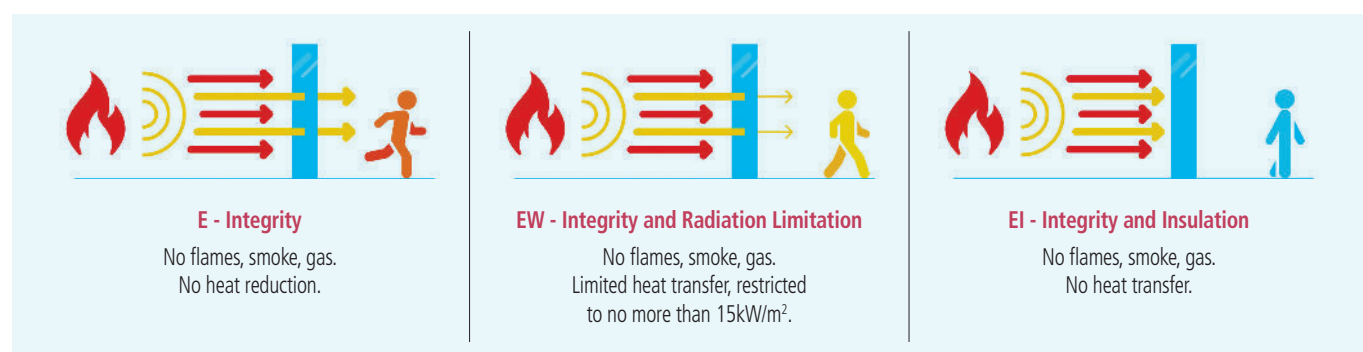
EI30 / EW60

AGC

Fire-resistant glass focusing
on your safety



Pyrobel 16 is a laminated glass assembled with sheets of glass and fire-resistant clear intumescent interlayers. In the event of fire, the interlayers transform into rigid and opaque fire shields, that keep out flames, limit the heat transfer through the glazing and reduce strongly the temperature on the protected surface of the Pyrobel glass. The glass delivers fire protection in both directions according to the standard EN 13501-2.



Technical data

Specification / Identification	Pyrobel 16	Pyrobel 16 EG	Pyrobel 16 IGU
Glazing type	Single	Single	Double (or triple) Glazing Unit
Grade	Internal	Internal, 1 side UV filter	External with UV filter
Glass thickness	17,3 mm	21,1 mm	Consult the Glass Configurator: www.agc-yourglass.com/ configurator
Thickness tolerances	± 1 mm	± 1,5 mm	
Dimensional tolerances	± 2 mm	± 2 mm	
Weight	ca 40 kg/m²	ca 48 kg/m²	
Minimum dimensions	No minimum	No minimum	
Light transmission / Light reflection (%)	85 / 8	84 / 8	
CV* Light transmission / Light reflection (%)	89 / 8	89 / 8	
U value (EN 673)	5,3 W/(m².K)	5,3 W/(m².K)	
Impact resistance (EN 12600)	2B2	1B1	
Burglar resistance (EN 356)**	NPD***	P2A	
Sound reduction (EN 12758) Rw (C; Ctr)	39 (-1; -3) dB	39 (-1; -3) dB	
Exposure temperatures	-40°C / +50°C		

* Clearvision (CV) optional, low iron extra clear glass by AGC.

** The burglar resistance can be increased from P2A to P8B by laminating or assembling in IGU Pyrobel with Stratobel & Stratobel Security Burglary.

*** No performance declared, see Glass configurator.

Fire certification

Check out the product selector for availabilities of fire certification on www.agc-pyrobel.com/selector. The installation must be done in compliance with the fire test report. Pyrobel(ite) is extensively tested & approved under different standards: EN, BS, UL, ASTM, NFPA,...



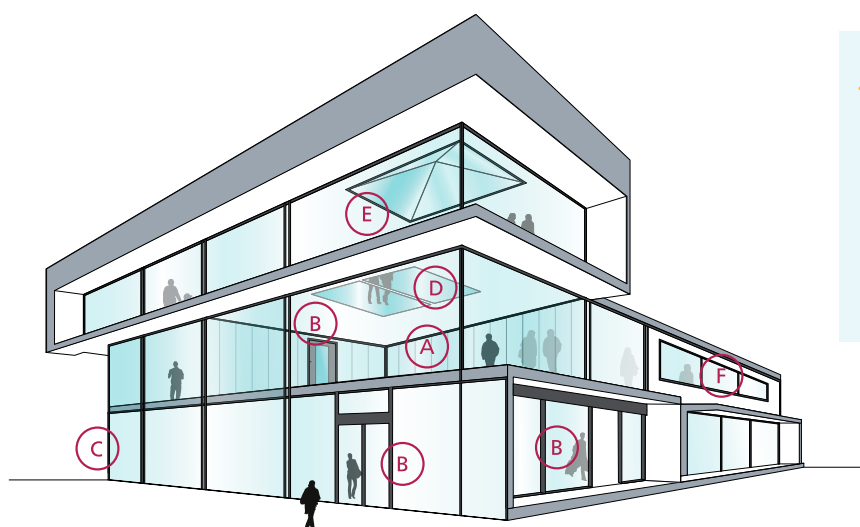
Your Dreams, Our Challenge

Availability

- SGU** Single glazing unit for internal application
- IGU** Insulated glazing unit for outdoor applications (double or triple glazing)
- EG** External grade version Pyrobel EG is single glazed Pyrobel with a 0,76 mm pvb interlayer and extra glass pane that acts as an UV filter
- VL** Vision Line which is an all-glass butt-joint glazing system without mullions. Multiple fire-resistant panes of glass are interconnected by means of a 4-5 mm silicone joint. Separate technical data sheets are available for this range of products
- SPS** Special products and combinations such as bulletproof and burglar resistant glass

Applications

The Pyrobel product range has been tested in a large variety of aluminium, steel, wood & butt-joint systems:



- A** Fire-resistant all-glass partitions
- B** Fire-resistant glazed doors
- C** Fire-resistant curtain walls - facades
- D** Fire-resistant floor glazing
- E** Fire-resistant roof glazing
- F** Fire resistant windows

Why choose Pyrobel(ite)?



THE SHORTEST DELIVERY TIMES

Since Pyrobel(ite) **can be cut** by our network of distributors, they can supply you with what you need **quickly and efficiently**.



CRADLE TO CRADLE CERTIFIED

Pyrobel(ite) is **Cradle to Cradle Certified™ Silver**.



PROVIDING SOLUTIONS

We support our customers **with our high-level expertise**.



ACOUSTIC INSULATION

Pyrobel(ite) has excellent **acoustic insulation properties**.



QUALITY

With 40 years of experience, Pyrobel delivers proven long-term quality. Pyrobel(ite) glass has an excellent optical quality supported by a **10-year warranty**.



MADE IN EUROPE



The information and data contained in this document are subject to change without notice.

Questions? Contact our sales team! www.agc-pyrobel.com/contact

