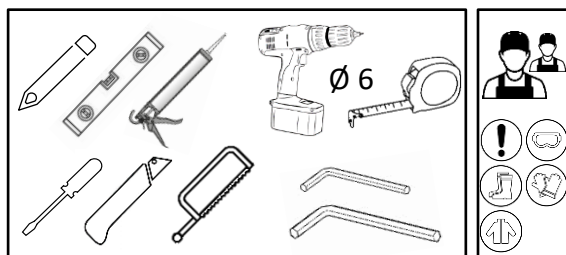


Dušas kabīnes montāžas instrukcija

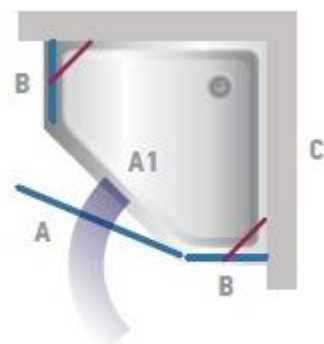
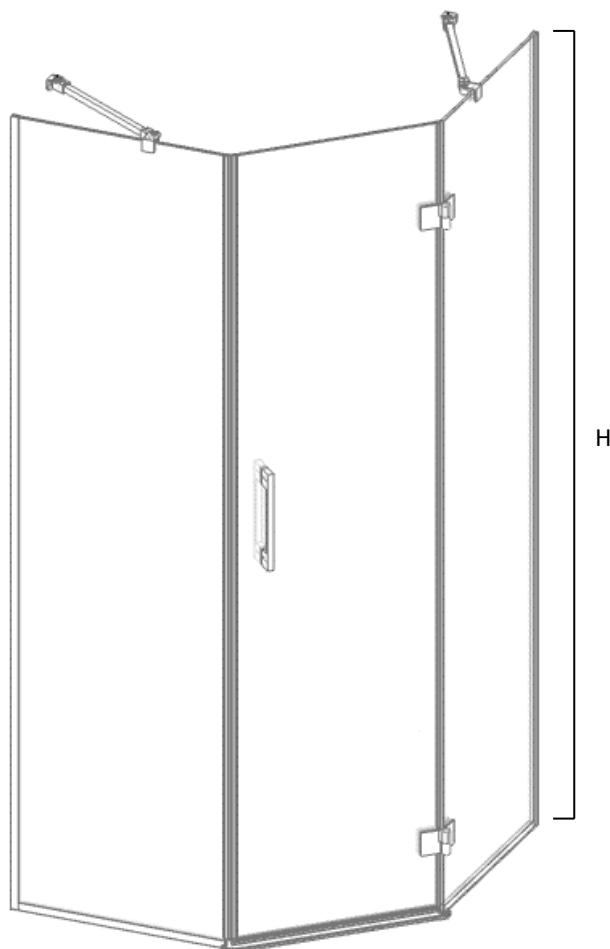
Инструкция по монтажу душевой кабины

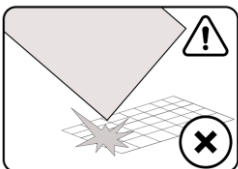
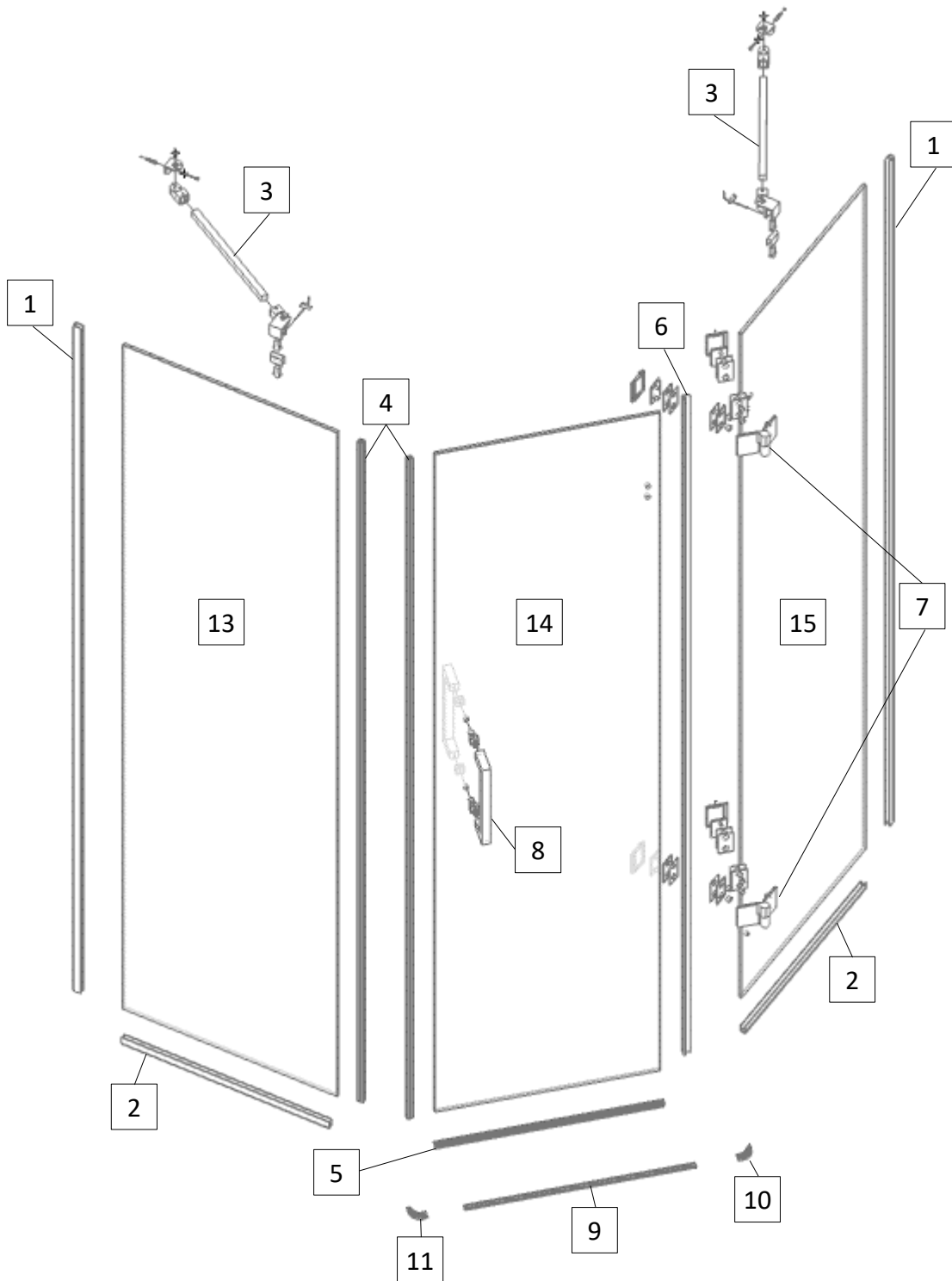
Shower enclosure installation assembly



1.		PAL-01	2
2.		PAL-01B	2
3.		SU45CH + SK2SET1	2
4.		NLO-KP2908-8-2,5	1
5.		R1653308	1
6.		NLO-SP-2902	1
7.		M981R - 135CH / M981L - 135CH	2
8.		NLO-ZD-2856	1
9.		SC-10x15ST	1
10.		8536E6/EV5-135R	1
11.		8536E6/EV5-135L	1
12.		3,5x35 SK1SET; Ø 6	2
13.		8 mm Safety Glass	1
14.		8 mm Safety Glass	1
15.		8 mm Safety Glass	1

ALESSIA	C (mm)	A (mm)	B (mm)	H (mm)
80x80ALES	790	490-495	425-430	1988
90x90ALES	890	490-495	525-530	1988
100x100ALES	990	590-595	555-560	1988
110x110ALES	1090	590-595	655-660	1988





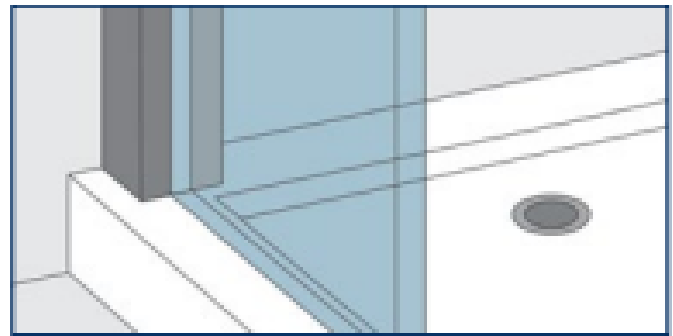
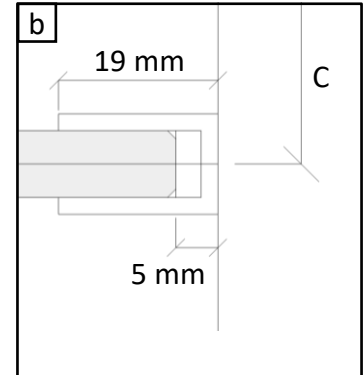
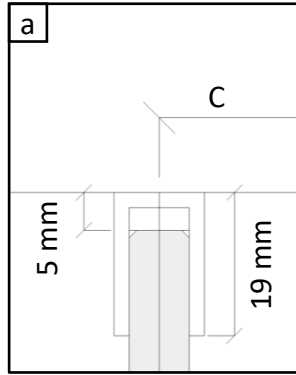
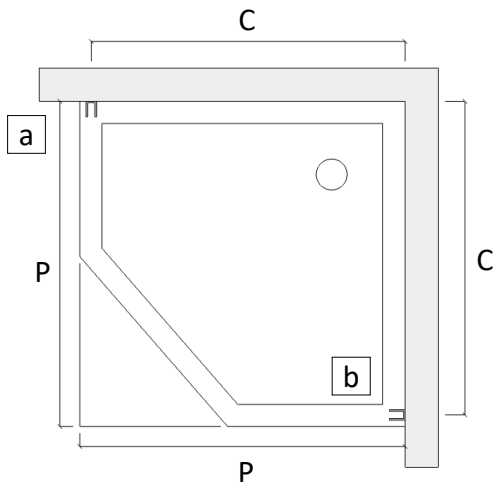
Uzmanību! Rūdīts stikls- rīkojieties uzmanīgi. Aizsargājiet stikla stūrus pret triecieniem.

Внимание! Закаленное стекло – будьте осторожны. Защищайте углы стекла от ударов.

Attention! Tempered glass - proceed with care. Protect the corners of the glass from impact.

1.A

ALESSIA	P, mm	C, mm
80x80ALES	800 x 800	783
90x90ALES	900 x 900	883
100x100ALES	1000 x 1000	983
110x110ALES	1100 x 1100	1083



1.B

ALESSIA	D, mm	S, mm
80x80ALES	800	800
90x90ALES	900	900
100x100ALES	1000	1000
110x110ALES	1100	1100

